



RESOLUTION NO. 2021-04

**A RESOLUTION OF THE COCONINO COUNTY
BOARD OF SUPERVISORS APPROVING AN AMENDED FINAL PLAT FOR LAKE
KAIBAB PARK SUBDIVISION**

WHEREAS, the final plat for the 348-lot Lake Kaibab Park subdivision was recorded on June 30, 1971 and the final plat for Lake Kaibab Park subdivision was previously amended on December 8, 2020 by the Board of Supervisors to allow for Lots 349 and 350 through approval of Resolution 2020-81; and

WHEREAS, Brince Wages of Williams, Arizona filed an application for a Final Plat Amendment of Lake Kaibab Park subdivision to allow the easterly half of Tract D, located at 1062 E Hctor Road, Williams, Arizona and also identified as Assessor's Parcel Number 202-36-080A to be divided into four parcels with the resulting parcels designated for residential uses as Lots 351 to 354; and

WHEREAS, the amended final plat conforms to the requirements of the Subdivision Ordinance;


NOW THEREFORE BE IT RESOLVED that the Coconino County Board of Supervisors approves the Lake Kaibab Park Subdivision Amended Final Plat #2.

PASSED AND ADOPTED this 9th day of March 2021.

AYES: 5
NOS: 0
ABSENT: 0

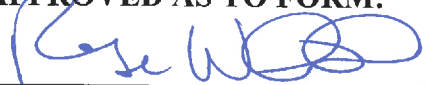
(SEAL)

COCONINO COUNTY BOARD OF SUPERVISORS



Matt Ryan, Chairman

APPROVED AS TO FORM:



Rose Winkeler, Deputy County Attorney

ATTEST:



Lindsay Daley, Clerk of the Board

Tract

”C”

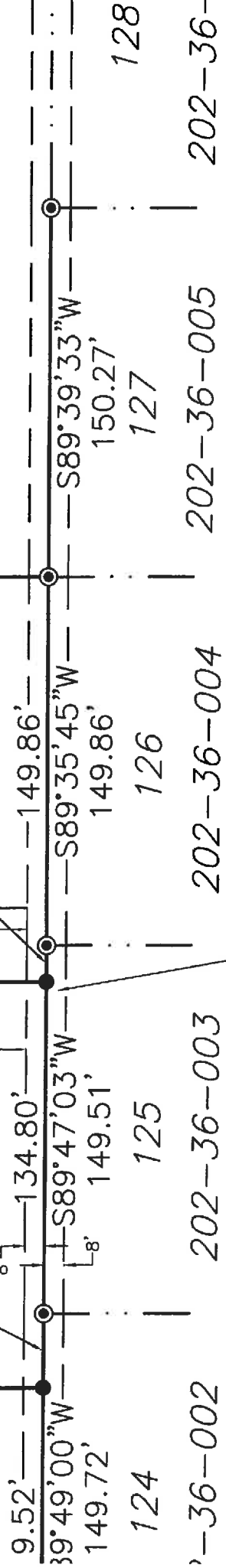
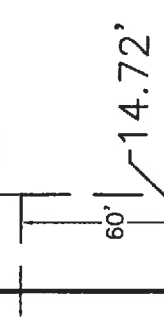
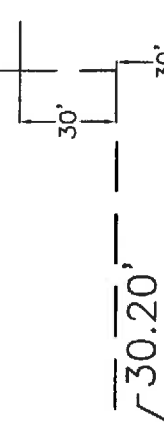
202-36-080B

52 ac.

Lot 353
1.034± ac.

Lot 354
1.029± ac.

UTILITY
NOT WITH 60' SQ.
BOUND



S00°17'28"E
271.42'

S00°22'44"E
272.58'

S00°22'41"E
273.22'

S89°47'03"W
S89°35'45"W
S89°39'33"W

8' PUBLIC UTILITY EASEMENT EACH
SIDE OF LOT LINE - DEDICATED
ON PLAT OF LAKE KAIBAB PARK AS
RECORDED AT CASE 2 MAP
306-306A, RECORDS OF COCONINO
COUNTY

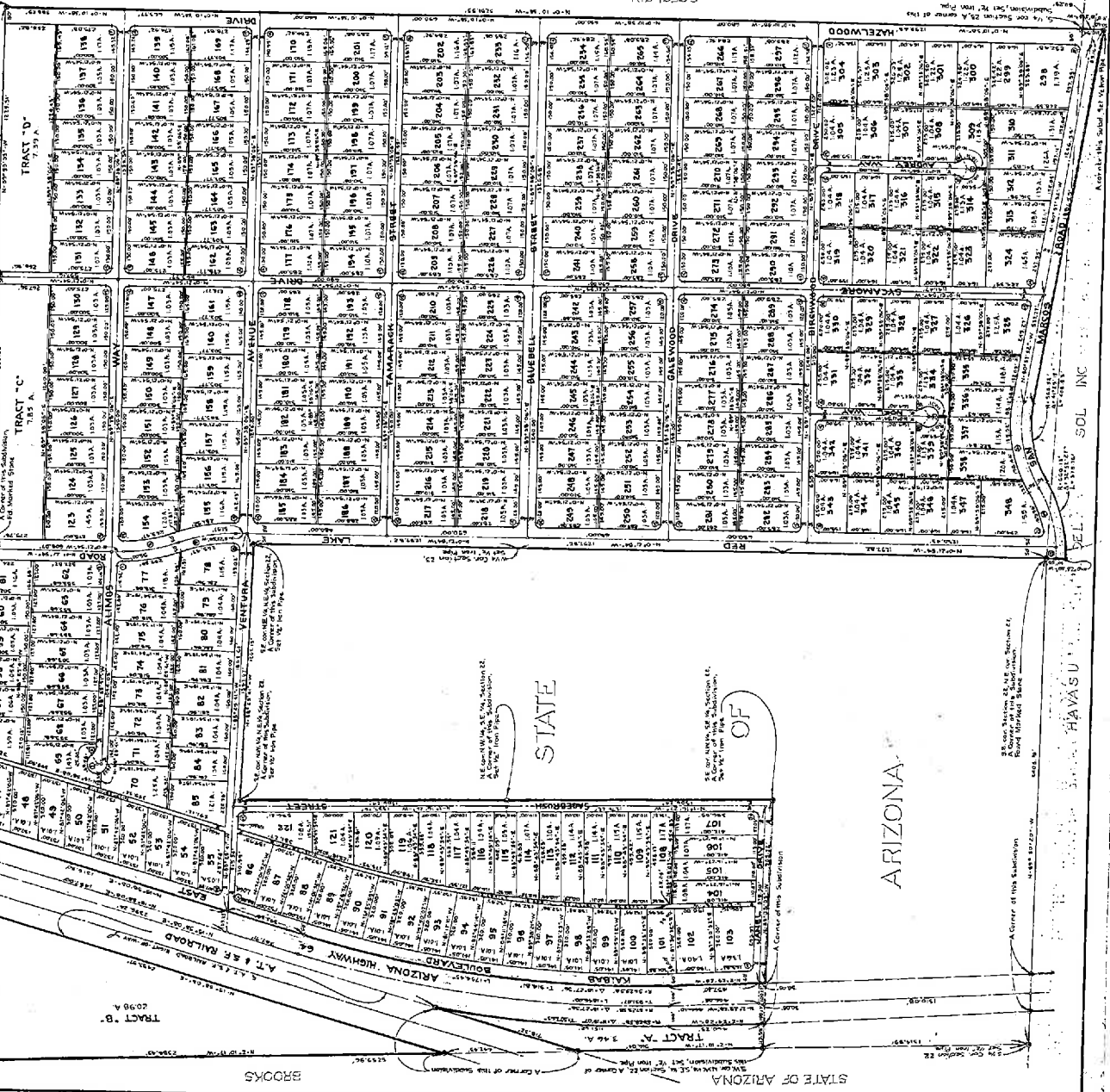
Lake Kaibab Park

DEDICATION:

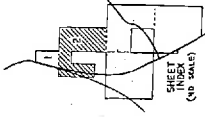
Case 2-Map 306-R
 P4-F4 TRACT NO. 1159
 SHEET 2 OF 2 SHEETS

4-11-1945
 State of Arizona
 Superior Court
 County of Coconino
 In and for the County of Coconino
 State of Arizona
 Superior Court
 County of Coconino

LAKE KAIBAB PARK
 CONSISTING OF 2 SHEETS IN THE COUNTY OF COCONINO
 DOBEN



TABLED CURVE DATA	DATA
1	10.000
2	10.000
3	10.000
4	10.000
5	10.000
6	10.000
7	10.000
8	10.000
9	10.000
10	10.000
11	10.000
12	10.000
13	10.000
14	10.000
15	10.000
16	10.000
17	10.000
18	10.000
19	10.000
20	10.000
21	10.000
22	10.000
23	10.000
24	10.000
25	10.000
26	10.000
27	10.000



SCALE 1" = 200'

PREPARED BY
 WILEY & ASSOCIATES, INC.
 SURVEYORS
 945-3102
 SCOTTSDALE ARIZONA



JOB NO. 2004