

# COVID-19 COCONINO COUNTY SCHOOLS UPDATE

COCONINO COUNTY  
*January 22, 2021*



# Introduction

The Arizona Department of Health Services (ADHS) has defined the following school benchmarks with corresponding recommended delivery models. All three benchmarks must be in 'minimal' for 2 consecutive weeks in order to return to in-person instruction. All three benchmarks must be in 'substantial' for 2 consecutive weeks in order to move to virtual instruction.

Benchmarks	Minimal	Moderate	Substantial
Cases	<10 cases/100,000	10-100 cases/100,000	>100 cases/100,000
Percent Positivity	<5%	5-10%	>10%
COVID-like Illness	<5%	5-10%	>10%
Recommended Delivery Model	<b>Traditional/In-Person</b>	<b>Hybrid</b>	<b>Virtual</b>

To report suspected or confirmed cases of COVID-19 within your school, please use the following link:  
<https://coconino.az.gov/2475/Case-Reporting>

## Jurisdiction Summary

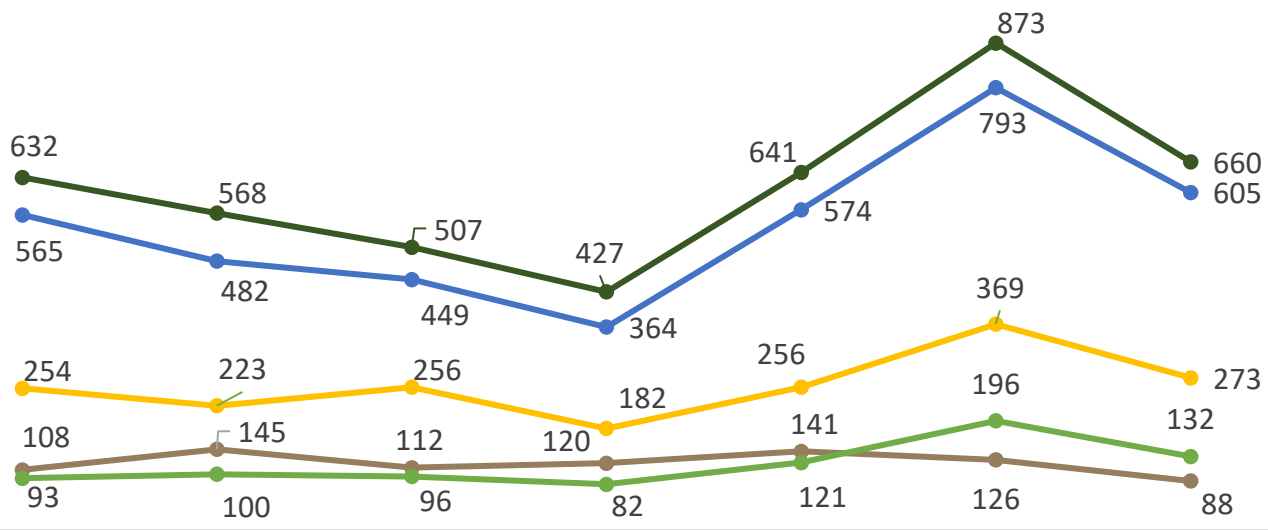
School Districts	Rate	% Positivity	CLI	ADHS Recommended Delivery Model
Coconino County Accommodation				<b>Virtual</b>
Flagstaff Charter Schools				<b>Virtual</b>
Flagstaff Unified				<b>Virtual</b>
Fredonia-Moccasin Unified				<b>Virtual</b>
Grand Canyon Unified				<b>Virtual</b>
Maine Consolidated				<b>Virtual</b>
Page Unified				<b>Virtual</b>
Tuba City Unified				<b>Virtual</b>
Williams Unified				<b>Virtual</b>
<b>Coconino County Total</b>				<b>Virtual</b>

\*Summary data is current as of 1/16/21. CLI is reported on page 5 using hospital surveillance from the ADHS dashboard at the county level. Not all county hospitals are reporting CLI. Percent positivity numbers may differ from ADHS, as ADHS does not include non-electronic lab reports in % positivity calculations.

# COVID-19 Situation Summary\*

**Location:**

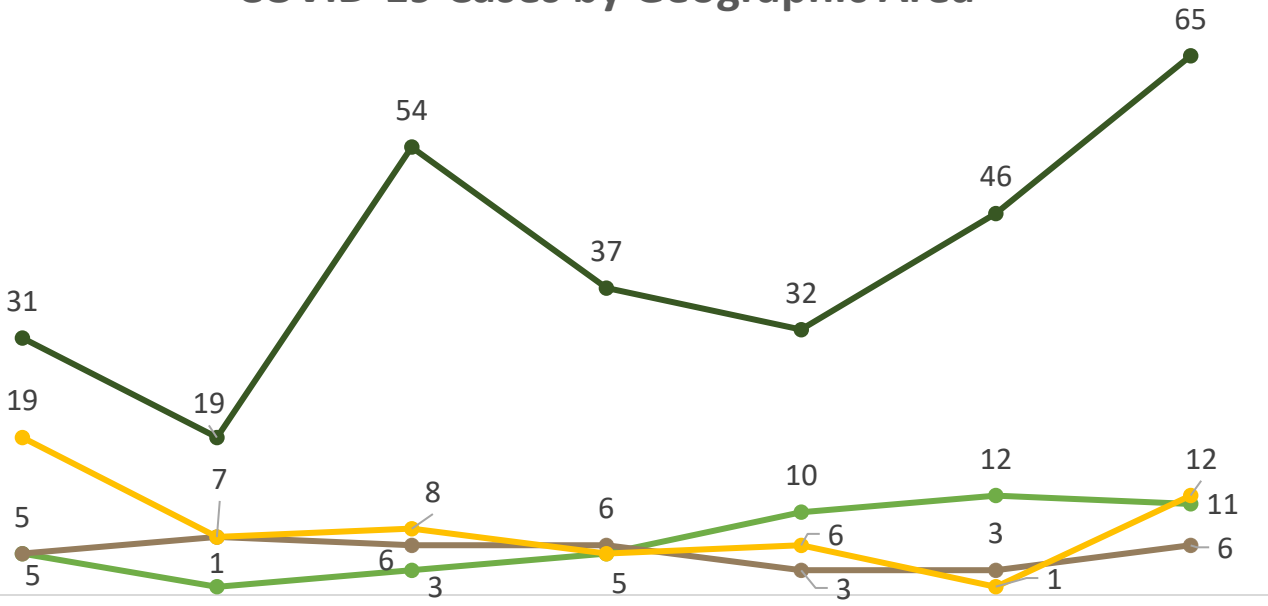
## COVID-19 Cases by Geographic Area



5-Dec-20    12-Dec-20    19-Dec-20    26-Dec-20    2-Jan-21    9-Jan-21    16-Jan-21

● Flagstaff Unified    ● Page Unified  
● Tuba City Unified    ● Coconino County Accommodation  
● Flagstaff Charter

## COVID-19 Cases by Geographic Area



● Williams Unified    ● Grand Canyon Unified  
● Maine Consolidated    ● Fredonia-Mocassin Unified

\*Cases reported from 3/15/20-1/16/21

# COVID-19 Situation Summary

## Location:

Location	Case Incidence per 100,000		Positivity Yield	
	Week Ending January 9 <sup>th</sup>	Week Ending January 16 <sup>th</sup>	Week Ending January 9 <sup>th</sup>	Week Ending January 16 <sup>th</sup>
Coconino County Accommodation (86004)	1,030.8	762.6	21%	20%
Flagstaff Charter (86001, 86004, 86005, 86011)	852.2	650.2	17.1%	15.6%
Flagstaff Unified (86001, 86004, 86005, 86011, 86015, 86017, 86018, 86020, 86035)	876.8	662.9	17.6%	16.1%
Fredonia-Moccasin Unified (86022)	48.7**	584.5**	25.0%	63.2%
Grand Canyon Unified (86023)	482.9**	442.7**	12.0%	22.0%
Maine Consolidated (86018)	348.8	697.7	6.5%	21.7%
Page Unified (86040, 86020, 86053)	1,045.6	730.3	31.2%	24.7%
Tuba City Unified (86045)	1,684.7	1,134.6	36.7%	21.9%
Williams Unified (86046)	873.5**	1,234.3**	33.1%	31.6%

\* The numbers above are subject to change in future reports, as data reporting may incur a 7 – 14 day lag from the date of testing.

\*\* Rate calculations are not accurate indicators with low case counts and/or populations <10,000.

## Key Take Away

- **No school districts in Coconino County have experienced two consecutive weeks below 100 cases per 100,000 population.**
- **No school districts in Coconino County have experienced a two-week positivity yield of 10% or below.**

# COVID-19 Situation Summary\*



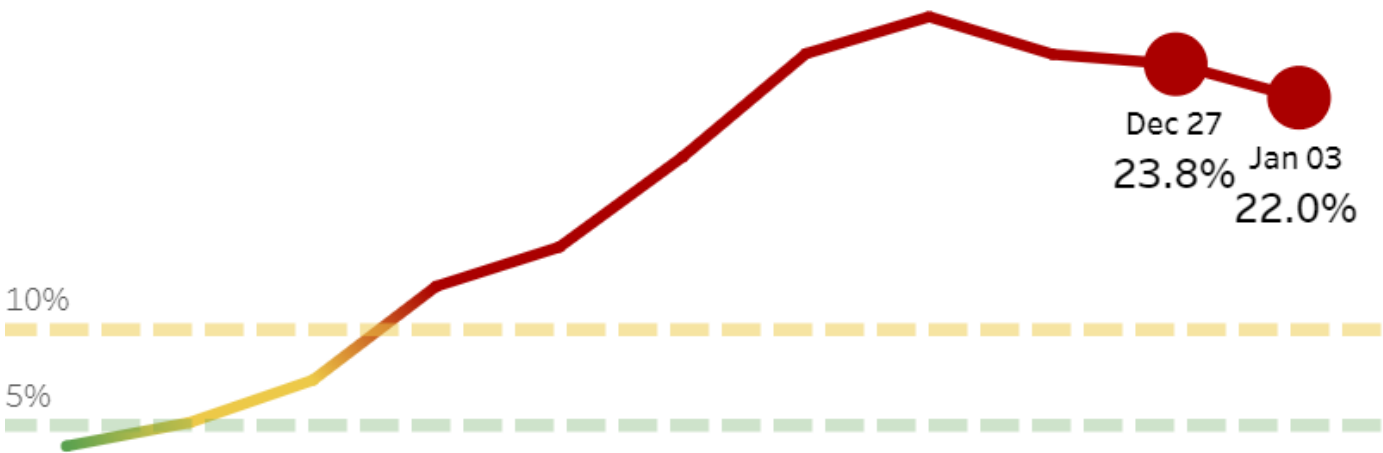
## Hospitalizations

(not all hospitals are currently reporting hospitalization data to Coconino County):

	Banner Page Hospital	Flagstaff Medical Center	Tuba City Regional Healthcare
Adult ICU Bed Availability (N)	2	9	2
Adult ICU Bed Availability (%)	67%	22%	20%
Emergency Department Bed Availability (N)	7	18	30
Emergency Department Bed Availability (%)	78%	50%	100%
Med/Surg Bed Availability (N)	5	21	3
Med/Surg Bed Availability (%)	29%	14%	6%

\*Hospital bed availability is determined based on bed availability as well as standard staffing schedules. Additional beds may be available that are not currently staffed.

## Hospital Visits for COVID-Like Illnesses Among Coconino County Residents:



Graph provided by [Arizona Department of Health Services](#)

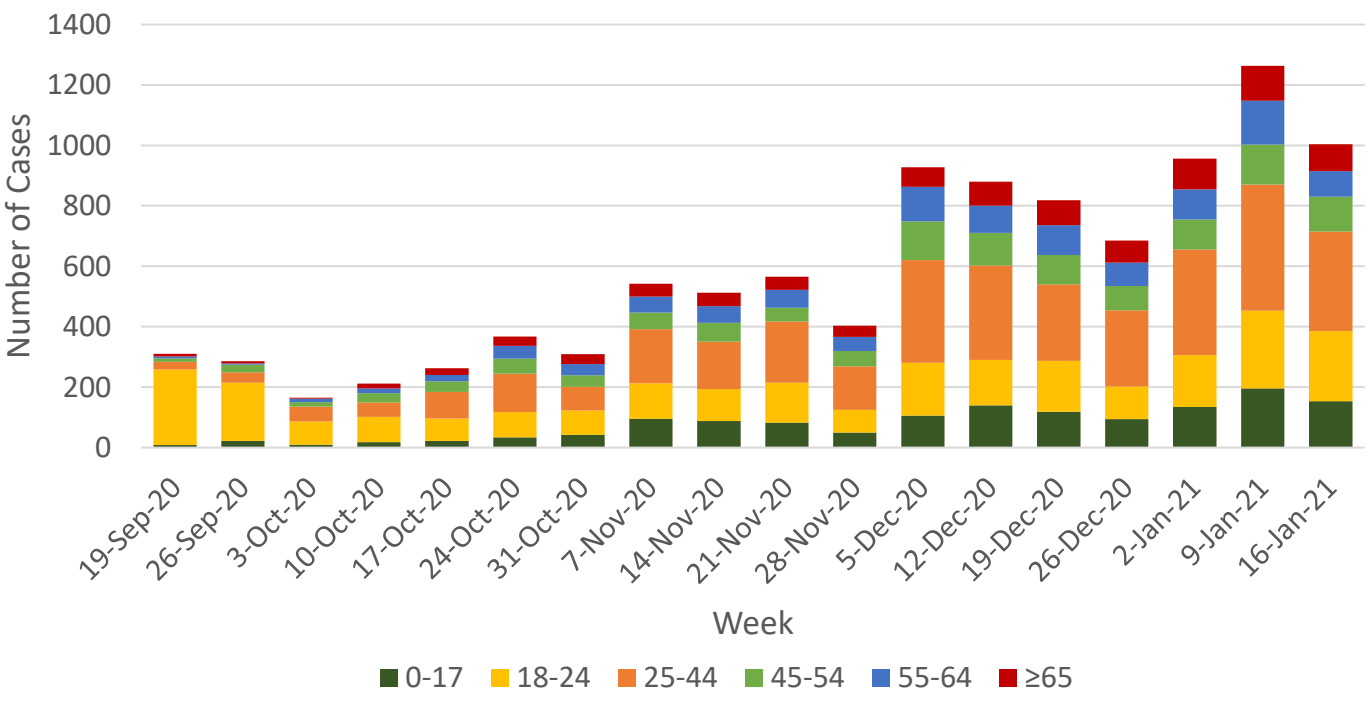
\*Cases reported from 3/15/20-1/16/21

# COVID-19 Situation Summary\*

## Age:

Age	Confirmed Cases*	Case Incidence per 100,000*
Under 18	1,762	6,291.7
18-24 years	3,466	11,257.3
25-44 years	4,499	12,752.3
45-54 years	1,611	11,309.2
55-64 years	1,445	8,720.1
65+ years	1,235	6,644.8

### Age of Confirmed Cases by Week



\*Cases reported from 3/15/20-1/16/21