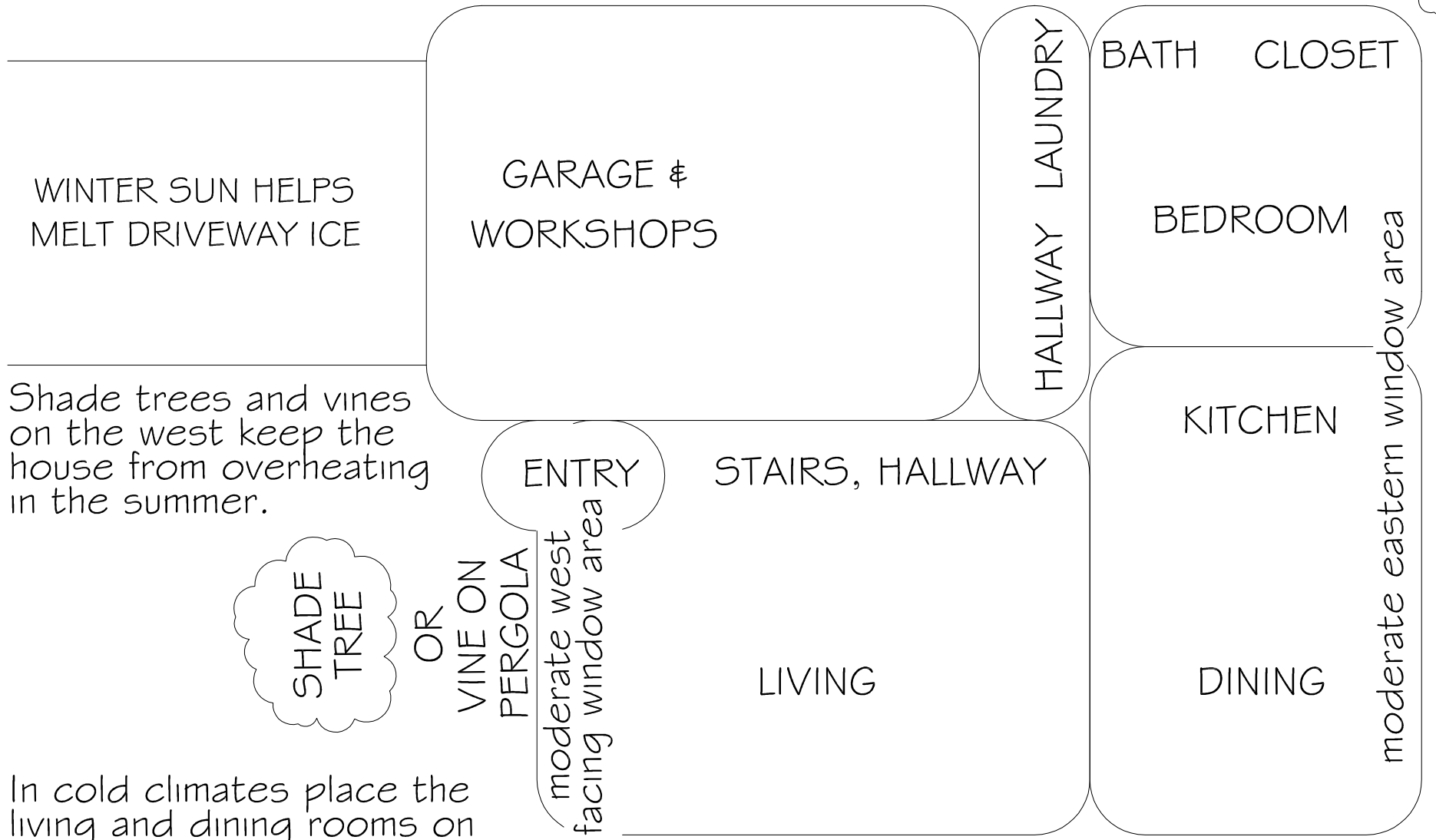


Evergreen trees on the north shield the house from winter limited or no north facing window area. winds



Shade trees and vines on the west keep the house from overheating in the summer.

In cold climates place the living and dining rooms on the south side of the house for year round comfort.

.20 sf to .35 sf of south facing window area for each sf floor space to heat.

plan may be mirrored or rearranged ↕